

# i-server User Manual

(tbpt Pet Tracker APP)



For Android, please download "i-server" from Google Play Store



For iOS, please download "i-server" from APP Store

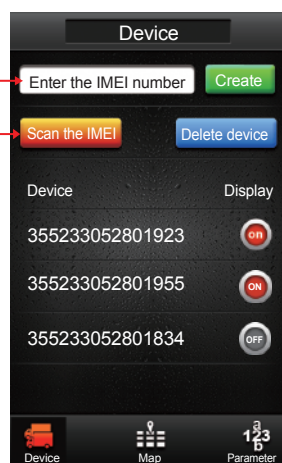
## ★ Caution

1. a SIM card with GPRS data transfer is NECESSARY
2. Turn off before charging
3. After 3 minutes being steady, the device will change to sleep mode (GSM/GPRS off). At the sleep mode the tracker would not operate. You may slight shake the device to wake it up and work again.

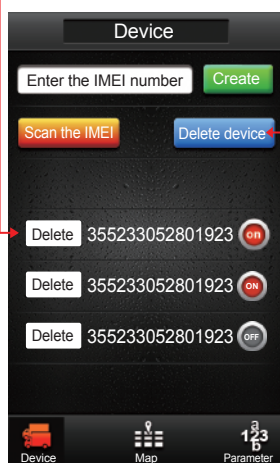


## 3 Create and Delete Device

- Two way to add the device:
1. Enter the IMEI number sticked on the tracker, and then press 【Create】 to add device.
  2. Scan the IMEI barcode to add device



- Delete the Device
1. Press 【Delete Device】
  2. Press 【Delete】

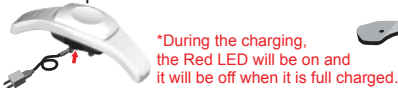


## 1 Tracker installation

1. Open the back lid, insert the SIM card, put back the back lid, and then lock the screw.



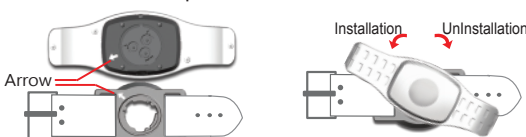
2. Charge with the USB cable and adapter for 2 hrs.



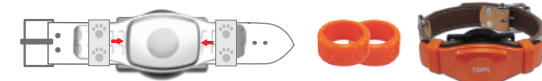
3. Make the collar through the docking



4. Follow the arrow, spin and lock to finish installation

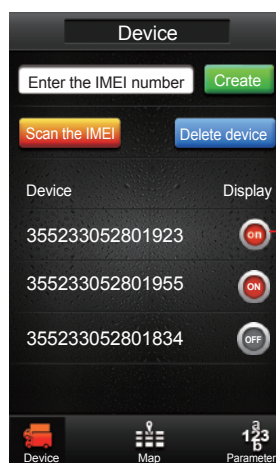


5. Apply the silicon band to the tracker would enhance the attachment of the tracker.



## 4 Display and Hide the device

After adding, the default display status of the device is ON, and the device will Display on the map. Pressing ON/OFF can switch the display status of the device on the map. When the status is OFF, the device will hide on the map.



## 2 APN Setup

### \*\*\*Please setup APN before using

The APN setting depends on the SIM card you used. If you don't know your APN, please contact the customer service of your local Telcom. Ex. China APN = CMNET, send text 510#0000#cmnet to your SIM number. Ex. Your sim card APN = internet, send text 510#0000#internet to your SIM number



Text  
510#0000#internet  
And then press Send  
After you receive the reply:  
SETUP OK:APN=internet  
IP=59.120.198.208:6969,  
you could start use your device.

## 5 Map - Instruction

- Instruction
- ① Device
  - ② Map
  - ③ Parameter: (remote setting for Parameter of the GPS device)
  - ④ icon: (press to change icon picture)
  - ⑤ Track Your current location
  - ⑥ Navigator mode
  - ⑦ Your current location
  - ⑧ Map layer
  - ⑨ Open History mode
  - ⑩ Device current location
  - ⑪ Select Device
  - ⑫ GPS signal status
  - ⑬ date, time and address
  - ⑭ IMEI
  - ⑮ Processing direction



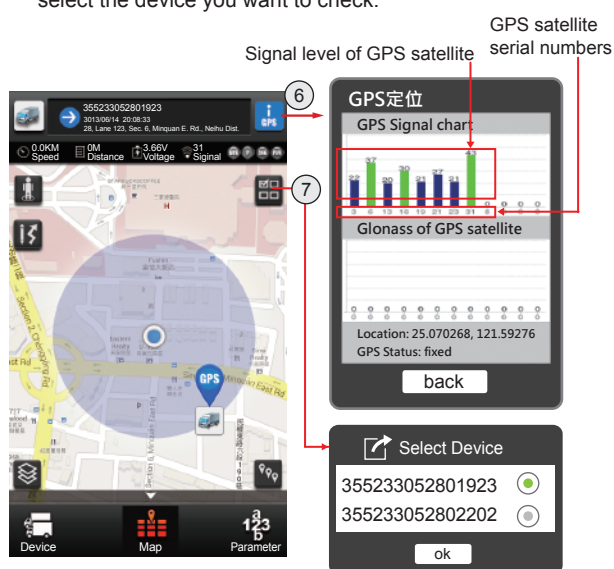
## 6 Change ICON

- ① Change icon picture: choose your flavor picture from default picture/Album/Take Picture:



## 7 Checking GPS signal

- ⑥ GPS status: press this key to check the GPS status
- ⑦ Select Device: when you have multiple devices, you can select the device you want to check.



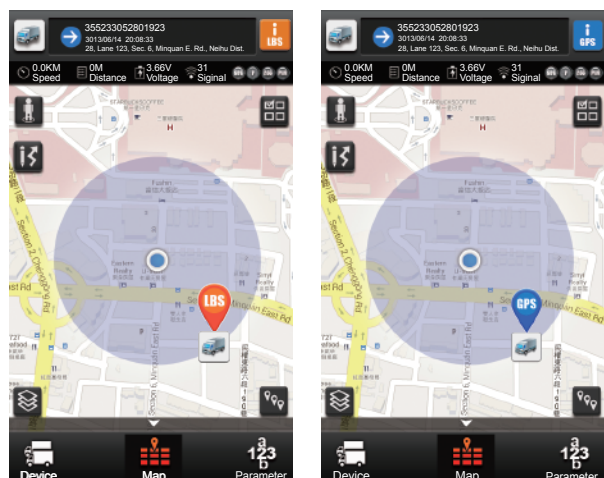
## 8 History route

- ⑨ History route: Select the Date to check the route of the device on the date.



## 9 GPS and LBS

1. GPS: When the GPS signal is good, it will use GPS to fix the location.
2. LBS: When the GPS signal is poor, the tracker will use the Telecommunication Base ot fix the location. The accuracy is 100~300 meters in the urban area and 500 meters to 2 km in the suburbs area.



## 10 Parameter setting

- ① Select Device: Select to remote setting for the certain device among the multiple devices
- ② Change Nickname
- ③ Report time
- ④ Urgent number (when low power)
- ⑤ Time zone

